



Technifor SA - Miribel site - F

# MICRO-PERCUSSION MARKING HEAD CN211Dp

## Integrable marking machine

Very large marking window (200 x 100mm).

**USAGE:** ideal solution for the marking of metal and plastic parts, of various shapes and surface conditions.

(automobile, mechanical, cast, electromechanical, ...)

**ENVIRONMENT:** conceived for industrial integration

- on production lines,
- in automatic or semi-automatic assembly or test stations.

## HIGH PERFORMANCE

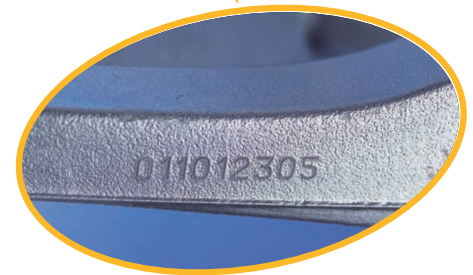
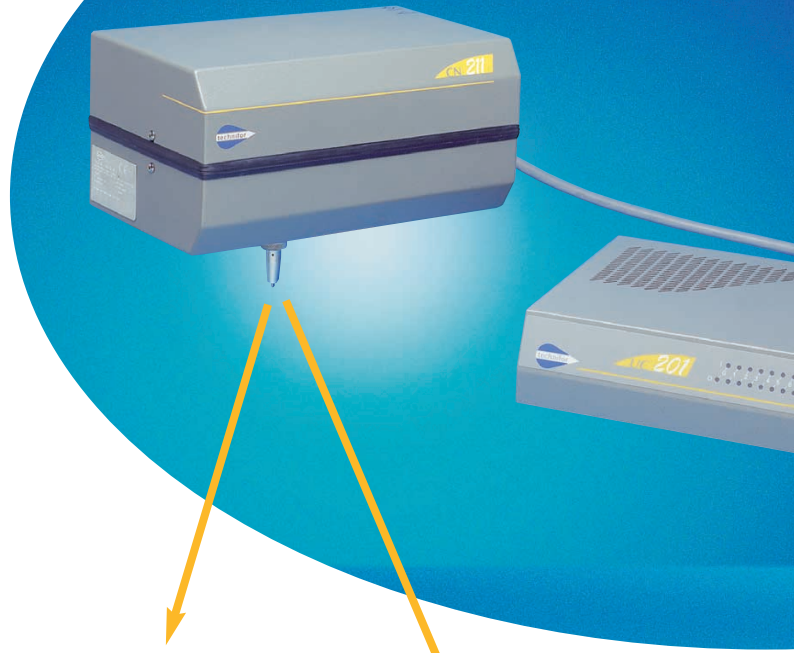
- Up to 6 characters per second.
- Characters from 0.5 to 45mm in height in steps of 0.1mm.
- "High definition" marking quality adjustable according to required marking speed.

## FEATURES

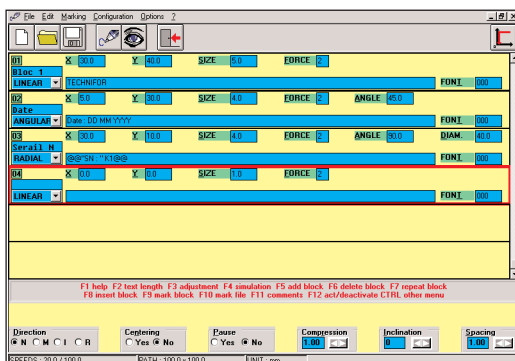
- Create / Modify / Save marking data.
- Calculation of variable data: date codes (several formats available), shift codes, serial numbers.
- Management of text style:
  - choice of fonts (standard, OCR, 5x7, ...),
  - choice of logos,
  - compression, spacing, automatic centering,
  - linear marking, angular, radial, inclination, inverted, mirrored.
- Downloading of custom fonts and logos.

## SIMPLIFIED INDUSTRIAL INTEGRATION

- **User-friendly:**  
T201W marking software for fast and easy composition of marking files. Installed on a PC, provides a user-friendly Windows® interface.
- **Control the marking head by:**
  - Control unit functioning in independent mode (PC disconnected).
  - PLC or other information system, via RS232 link.
  - File selection from memory, from PLC via the Input / Output board.
- **Easy to mount:**
  - Simple attachment: 2 M8 mounting holes.
  - 2 Ø8H8 positioning holes.



CHR211 height adjustment system



T201W Windows® marking software

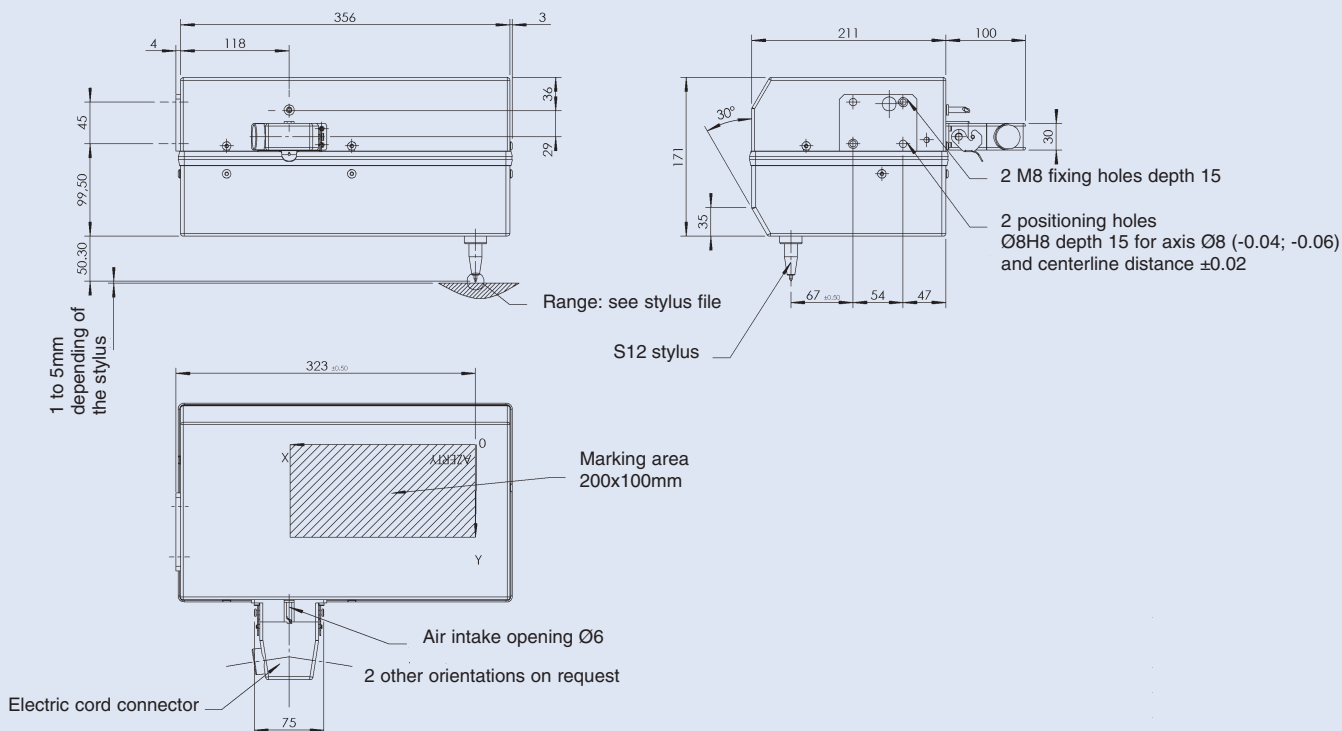


Rotary marking device



Column

# TECHNICAL SPECIFICATIONS



## Environment:

- Dimensions (l x h x w): 356 x 211 x 171mm (without stylus)
- Weight: 9.5 Kg
- Air supply: operating pressure from 5,5 to 8 bars, (6 bars nominal) with Ø 6 mm pneumatic fitting.
- Consumption : 0.4 to 0.7 NI / character, Max: 3 SCFM.
- Operating temperature : +5 to +45 °C (+41 to +113 °F).

## UC201 control unit

- Dimensions (l x h x w) without connectors: 420 x 290 x 100mm
- Weight: 6.5 Kg
- Electrical supply: 115 or 230 VAC
- Consumption: 100 W
- Memory capacity: 121 Kb
- Data input by:
  - PC using T201W Windows® software.
  - PLC via RS232 link (DB9 connector).
  - Other information systems via RS232 link.
  - Bar code readers via RS232 link (optional).
- File selection from memory:
  - by 6I / 4O or 8I / 8O board.
  - by RS232 connection.
- Communication interface (DB25 connector)
  - Start of marking.
  - End of cycle.
  - Reset.
  - Machine ready (in independent mode).

## Accessories/Adaptations:

- Extended stylus.
- Extended amplitude stylus.
- 3m Head/UC cord (standard), 6m, 10m or 15m.
- Height adjustment system (+/- 22mm).
- Flat or V-shaped feet with handle for portable version.
- Column.
- Rotary marking device (2 models).
- Tag feeder device.
- Plate holder and magnetic clamping.
- Start marking foot pedal.
- 6I / 4O or 8I / 8O board.

## Options:

- Downloading of fonts and logos (HPGL).
- T201W Windows® marking software.
- Data input (UCBARCODE) via RS232 link.
- 2D Data Matrix® codes.
- Rack mount UC201 (19" 3U).
- Waterproof cabinet (IP54) for UC201.

## Norms:

- Directive "Machine" 89/392/CEE.
- Directive "Electromagnetic compatibility" 89/336/CEE.
- Directive low voltage "Electric devices" 73/23/CEE.
- Complies with Part 15 of the FCC rules.

