

+ Stand-alone operation

The UC112 controller integrates :

- The composition of the text to mark (removable keyboard).
- Control of the marking head :
 - micro-percussion,
 - scribing.



+ Easy to integrate

- The **internal software** allows **stand-alone** operation of the UC112 (no need for a PC or PLC).
- **3 mounting options** :
 - **Inside** an electrical panel (mounting tabs included).
 - **19" Rack 4U (optional)**.
 - **Bench top configuration** (feet included).

+ Easy to program

thanks to several options for data input:

- External keyboard 105 keys AT (included).
- T101W Windows[®] software for PC(optional).
- PLC via RS232 link.
- Bar code reader or other RS232 device (optional).

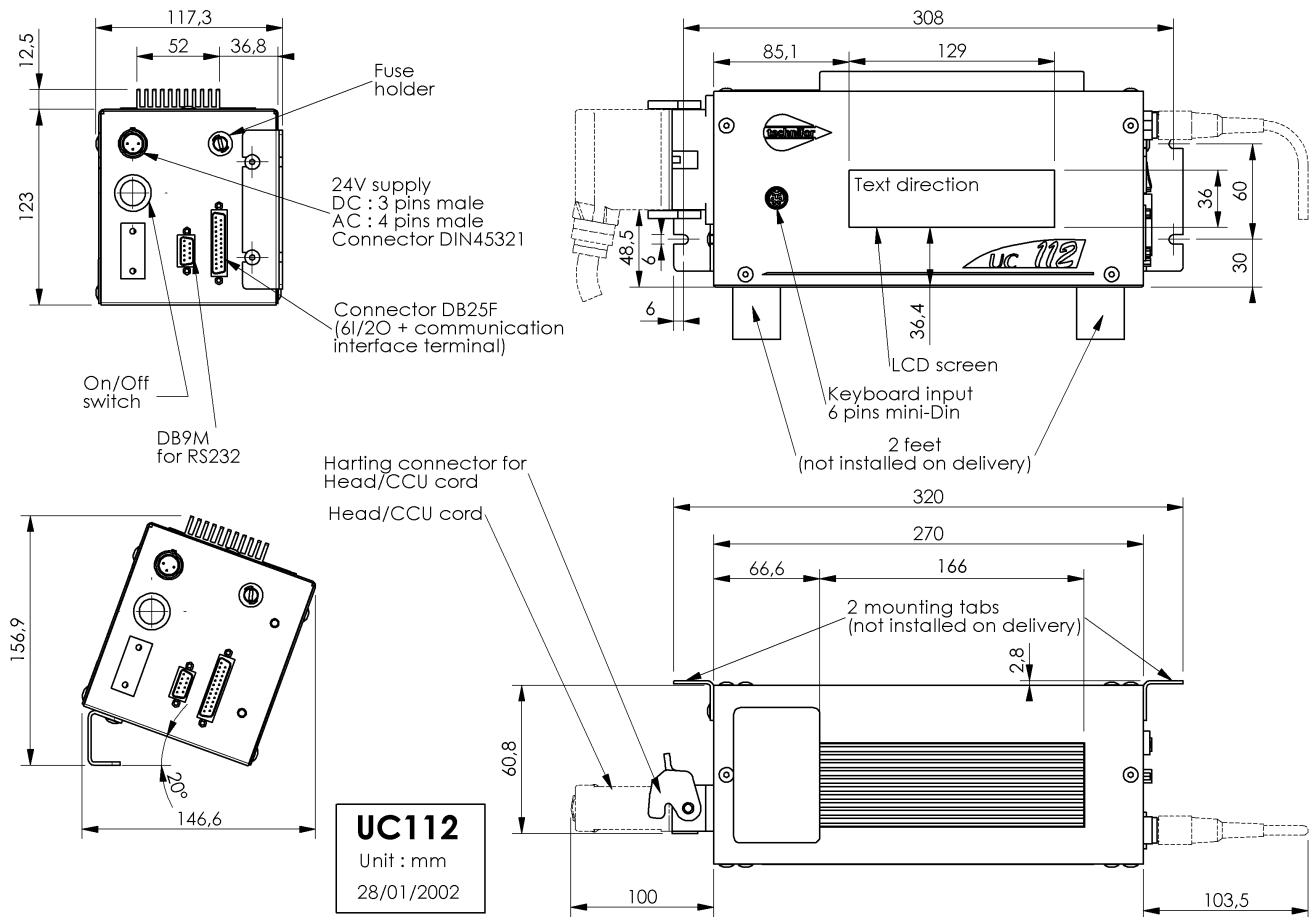
+ Secure

- Operator / Administrator Mode.
- Removable keyboard.
- File transfer software allows memory backup to PC (optional).

+ Integrated software functions

- Creation / Modification / Storage of marking files.
- Management of 6 Input / 2 Output board.
- Calculation of variable data : date codes in multiple formats, shift codes, serial numbers.
- Text management :
 - Choice of fonts (standard, OCR, 5x7, ...),
 - Choice of logos,
 - compression, spacing, automatic centering,
 - linear, angular, radial, italicized, inverted, mirrored marking.
- Downloading of custom fonts and logos.

Technical Specifications



The 24 V AC power supply is specific for electro-magnetic marking head.

Environment

- Dimensions (l x h x w) : 270 x 117.3 x 135.5 mm
- Weight : 3.2 Kg
- Power supply : 24 VDC or 24 VAC +/-10% (connector DIN 45 321 - 3 pins for DC, 4 pins for AC)
- Consumption : 110 W (with 24 VDC power supply)
200 VA (with 24 VAC power supply)
- Operating temperature : +5 to +40 °C (+41 to +104 °F)

Accessories / Adaptations

- 230 V AC / 24 V DC - 3 A power supply
- 230 V AC / 24 V AC - 4 A power supply
- 115 V AC / 24 V DC - 3 A power supply
- 115 V AC / 24 V AC - 4 A power supply

Options

- 19" 4U rack mount adapter
- Code 2D DataMatrix
- Downloadable fonts and logos
- T101W Windows® standard marking software
- File transfer software UC112 to PC
- RS232 data input (UCBARCODE)

Norms

- Directive "Machine" 89/392/CEE
- Directive "Electro Magnetic Compatibility" 89/336/CEE
- Low voltage directive "Electrical equipment" 73/23/CEE

Control Unit

- Processor : 32 bits
- Memory Capacity : 51 Kb
- LCD screen, 129 x 36 mm (6 lines of 40 characters),
- Continuous line font, OCR, 5x7
- Communication interface (on DB25 connector)
 - Start of marking
 - End of cycle
 - Reset
 - Machine ready to start marking
 - 6 Input / 2 Output board
- Data input by :
 - External keyboard 105 keys AT (included)
 - Windows® software
 - PLC via RS232 link (DB9 connector)
 - Bar code reader or other RS232 device (optional)
- File select from memory :
 - From keyboard
 - by 6I / 2O board (on DB25 connector)
 - by RS232 link

Technifor

114 quai du Rhône - F-01708 MIRIBEL CEDEX
Tél +33 (0)4 78 55 85 50 Fax +33 (0)4 78 55 85 60
E-mail : tf@technifor.com
web site : www.technifor.com

Distributed by:

ROBERT I. ROBOTICS INC.

343 SOVEREIGN ROAD

LONDON, ONTARIO

N6M 1A6, CANADA

Tel: 519.453.2088 Fax: 519.453.4165

Email: technifor_sales@robertirobotics.com

www.robertirobotics.com