

Integrable marking machine

Compact, 50 x 40mm marking window.

USAGE: ideal solution for the marking of metal and plastic parts, of various shapes and surface conditions. (aerospace, automobile, mechanical, cast, electromechanical, ...).

ENVIRONMENT: conceived for industrial integration

- on production lines,
- in automatic or semi-automatic assembly or test stations.

HIGH PERFORMANCE

- Specially conceived for marking that meets the criteria for "Excellent" as defined by the IAQG (complies with SPEC2000):
 - Data Matrix™ marking.
 - 5x7 font (complies with DT05-89).
- Characters from 0.5 to 45mm in height in steps of 0.1mm

INTEGRATED SOFTWARE FEATURES

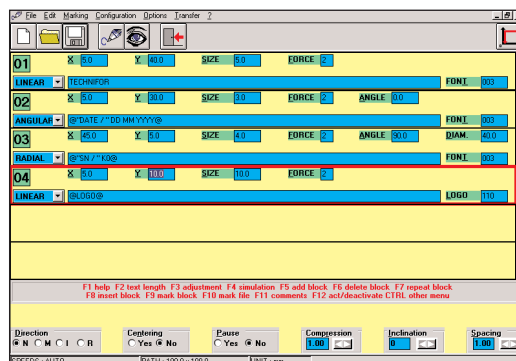
- Create / Modify / Save marking data.
- Management of 6 Input / 2 Output board.
- Calculation of variable data: date codes (several formats available), shift codes, serial numbers.
- Management of text style:
 - choice of fonts,
 - choice of logos,
 - compression, spacing, automatic centering,
 - linear marking, angular, radial, inclination, inverted, mirrored.

SIMPLIFIED INDUSTRIAL INTEGRATION

- **User-friendly** integrated software:
 - The internal software permits independent operation of the UC112 (no need for an external PC or PLC to program the control unit).
- **Control the marking head by:**
 - File selection from memory of the UC112 by activation of inputs.
 - Control unit in independent mode.
 - PLC or other information system, via RS232 link.
- **Easy to mount:**
 - Simple attachment: 2 M8 mounting holes.
 - 2 Ø8H8 positioning holes.



CHR211 height adjustment system



T101W Windows® marking software



Protective bellows

Environment:

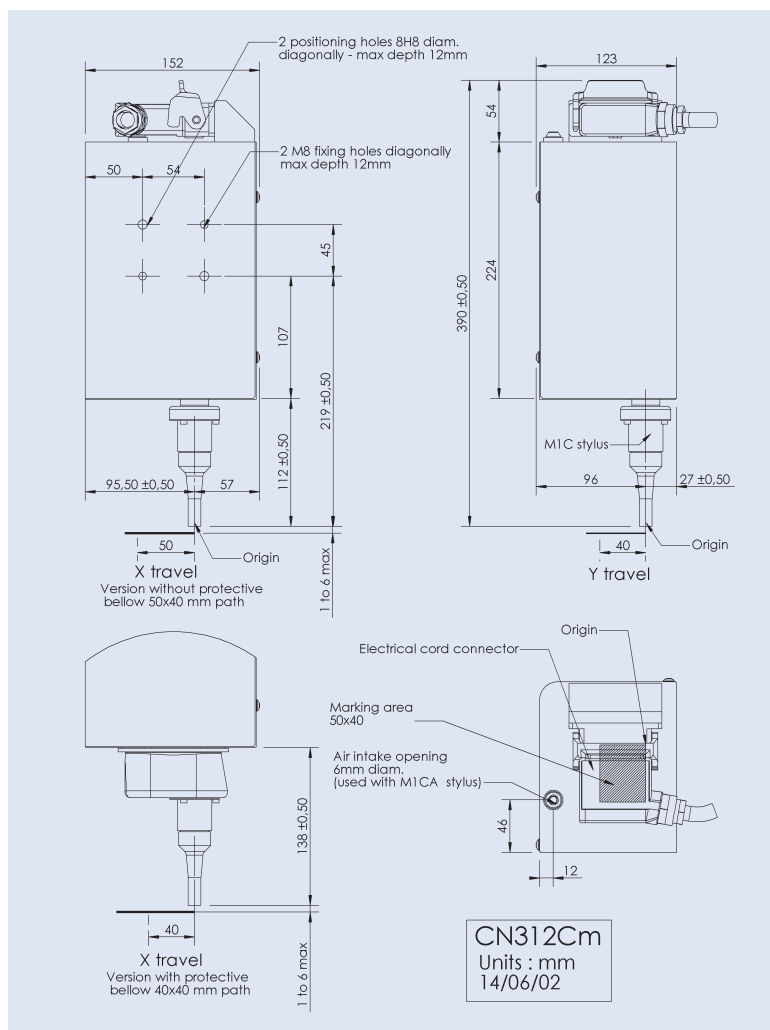
- Dimensions (l x h x w):
153 x 123 x 279mm (without stylus and connector)
- Weight: 6.8Kg.
- Operating temperature : +5 to +45 °C (+41 to +113 °F).

Accessories/Adaptations:

- Stylus points at 60°, 90°, 120°.
- 3m Head/CCU cord (standard), 6m, 10m or 15m.
- Protective bellow (reduces marking window to 40 x 40mm).
- Height adjustment system (± 22 mm).
- Column.
- Start marking foot pedal.
- Start cycle / End cycle button box.
- 230 V AC / 24 V AC – 200 VA power supply.
- 115 V AC / 24 V AC – 200 VA power supply.

UC112 control unit

- Dimensions (l x h x w) without connectors:
270 x 117,3 x 135,5mm
- Weight: 3.2Kg
- Electrical supply: 24 VAC $\pm 10\%$
- Consumption: 200 VA
- Memory capacity: 51 Kb
- Data input by:
 - 105 key AT external keyboard (supplied with UC112).
 - PC using T101W Windows® software.
 - PLC via RS232 link (DB9 connector).
 - Other information systems via RS232 link.
 - Bar code readers via RS232 link (optional).
- File selection from memory:
 - by 105 key AT keyboard.
 - by 6I / 2O (on DB25 connector).
 - by RS232 connection.
- Communication interface (DB25 connector):
 - Start of marking.
 - End of cycle.
 - Reset.
 - Machine ready.
 - 6I / 2O.
- Data Matrix™ 2D Code.



Options:

- T101W Windows® marking software.
- TW02 File transfer software between the UC112 and a PC.
- External data input via RS232 link
- 19" 4U Rack mount face plate for UC112.

Norms:

- Directive "Machine" 89/392/CEE.
- Directive "Electromagnetic compatibility" 89/336/CEE.
- Directive low voltage "Electric devices" 73/23/CEE.
- Complies with Part 15 of the FCC rules.



Technifor SA - Miribel site - F



Distributed by: ROBERT I. ROBOTICS INC.
LONDON, ONTARIO, CANADA, Tel: 519.453.2088
Email: technifor_sales@robertirobotics.com
<http://www.robertirobotics.com>